

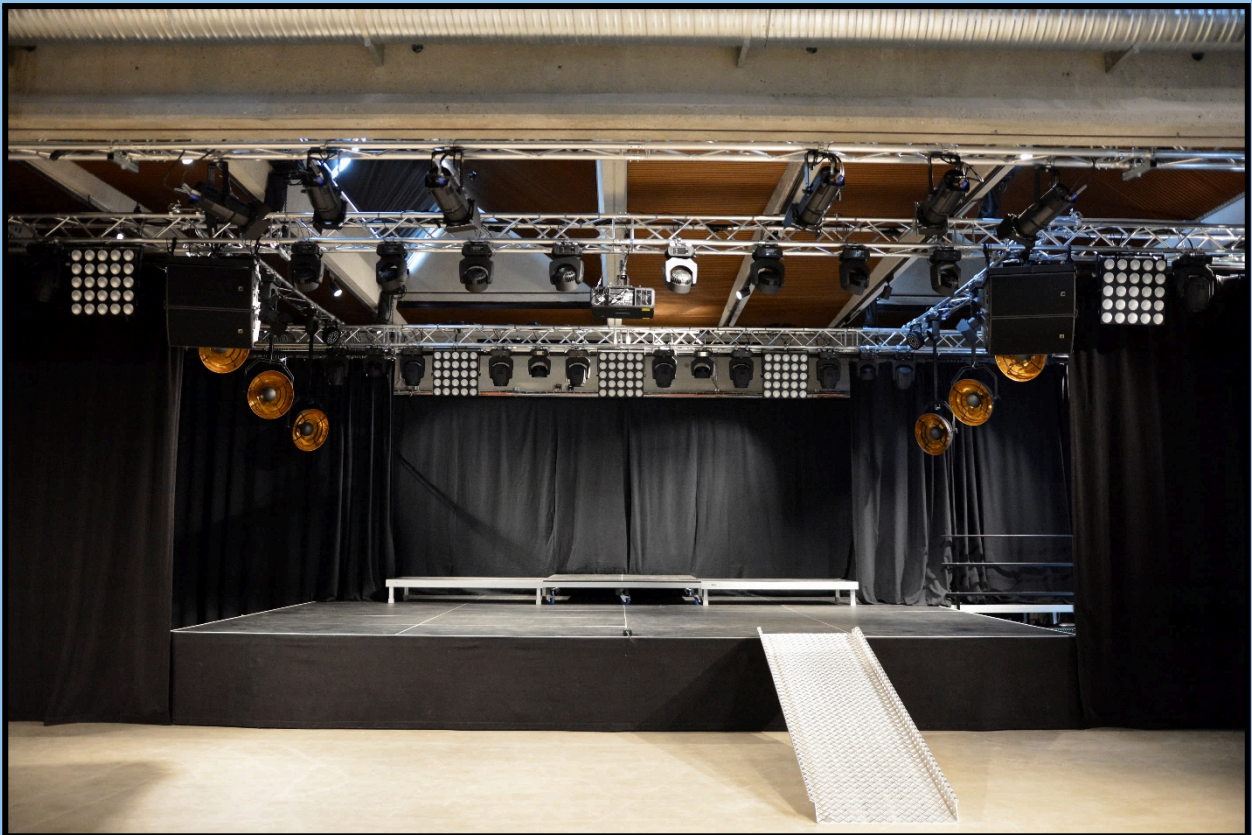


# RICHTER

## **Richter** Venue specification

---

Valid from October 2022



# **Someday soon, you will be playing at Richter.**

Richter is a voluntary driven venue with support from Gladsaxe municipality.

All staff except the house sound technician and office are volunteers.

The venue has an audience capacity of 400 + 149 for complimentary tickets, artists and staff. Your guest list capacity is outlined in the deal.

The venue is situated at the town of Søborg which is approximately 9,5km (5 miles) from the center of Copenhagen, but you will be close to pretty much anything you might require.

We hope that you will take the time to read the following pages, as they should provide you with answers to the most common questions prior to your concert here at Richter.

Should any questions remain after reading this document, please do not hesitate to call or e-mail us.

Upon your arrival you will be greeted by the voluntary venue manager, who will ensure that you are well settled in the backstage area and that everything is according to our agreements.

The venue manager will be your main contact all day. We look forward to having you here and hope you will have a pleasant stay in Søborg.

# General Information

## Address

The venue address is: Telefonvej 16 2860, Søborg.

## Finding the venue

When you arrive at “Telefonvej” you will be greeted by a sign that says Telefonfabrikken and Richter, when you see this sign turn right and follow the road, at the end of the road you will see another sign that says Richter then turn left, after you have turned left you will arrive at a carport where you will park and load in  
(see map at the bottom of this document).

## Parking

If you arrive in a car or in a van, please park underneath the carport up against the wall so that other cars can pass through. If you arrive in a bus, then park up against the lawn further down the road (see map at the bottom of this document).

We have one 16A 3 phase CEE for bus power.

Keep all gates, doors and walk paths cleared at all times. All parking is free.

## Load in

Before load in please announce your arrival by going through the main entrance (see map at the last page of this document). There you will be greeted by the venue manager, technicians and crew, who will open the gate at the carport. From the gate to the main stage is approximately 40m with no obstacles in the way.

## Venue crew

Depends on production size, but as a minimum:

01: Voluntary venue manager 01: House sound engineer 01: Voluntary light engineer

## Wifi

Free WLAN is available

please choose the network with SSID: Gladsaxe. WLAN is not password protected.

### **Dressing rooms**

One big dressing room with a shower, toilet, clothing iron, a sofa, a full-size mirror, a fridge, and a coffee machine.

One small dressing room, with two makeup mirrors, one table, four chairs, a fridge and a full-size mirror.

Both dressing rooms are next to the main stage with direct access to the load in area and carport.

### **Fire – Pyro – Confetti – Co2**

Please note that use of open fire, pyrotechnics, confetti and CO2 are not allowed at Richter.

### **Smoking**

National law prohibits smoking in public areas, including but not limited to performance and backstage facilities. Smoking is allowed outside the venue. We kindly ask you to respect this rule, as we did not invent it nor do we want to spend all day acting as bad cops.

### **Merchandise**

All Merchandise can be put up at our lounge area. Please talk to the venue manager on the day about the setup of this. Additional clothing racks and lights are available.

### **dB limits**

To ensure a healthy concert experience to our audience, and to comply with EU noise regulations towards our staff, we are enforcing a dB limit of 103 dB(A) averaged over 15 minutes (Leq 15 = 103 dB(A)). Values will be measured at FOH. A properly calibrated measurement system (<https://www.10eazy.com/>) will be available to the sound engineer.

Richter doesn't use a peak limiter or circuit breaker to enforce the rule, but our house engineer will engage in reducing the overall sound level if rules are not complied with.

# Sound

## **FOH**

Midas Pro2-CC-IP Digital Mixer.  
w/Midas DL251 StageBox 48 in/16 out.

## **PA**

02: L'acoustics LA4X.  
02: L'acoustics ARCS Wide.  
02: L'acoustics ARCS Focus.  
04: L'acoustics SB18.

## **Digital guestlines**

02: CAT 7 lines from main stage FOH to main stage right.

## **Side fills/inner fills**

02: Turbosound NuQ152-AN.

## **Monitors Available**

08: Turbosound TFX122M-AN.  
02: Turbosound IP15B  
02: Turbosound NuQ118-AN.

## **Additional consoles/stageboxes**

Midas M32r Digital Mixer.  
02: Midas DL153 StageBoxes 32 in/16 out.

### **Multitracking and virtual soundcheck**

01: 72 channel 96khz 24bit recording system powered  
by an Etherface 3 x AES50 interface by DSPRO.

### **Wireless system**

12: Shure QLXD4 Digital wireless receiver.

06: Shure QLXD2/Beta 58A-K51 Wireless handheld transmitter.

06: Shure QLXD1-K51 Wireless bodypack transmitter.

### **Microphones**

02: Audio-Technica AE3000.

02: Audix I5.

06: Audio-Technica AE5100.

06: DPA 4266.

04: Audio-Technica ATM350A.

04: Sennheiser E604.

02: Audix ADX51.

02: Shure Beta 52A.

02: Audix D2.

08: Shure Beta 58A.

02: Audix D4.

02: Shure Beta 91A.

02: Audix D6.

08: Shure SM57.

### **DI's**

02: ARX DI USB Pro.

14: Klark Teknik DN100.

02: Klark Teknik DN200.

### **Stands**

06: K&M Microphone stand w. long legs & boom.

08: K&M Microphone stand w. short legs & boom.

06: K&M Medium size microphone stand w. boom.

04: K&M Small size microphone stand w. boom.

06: K&M Small stand w. base plate & boom.

06: K&M Solist stand.

# Lights & AV

## **FOH**

Chamsys MagicQ MQ80.

## **ArtNet node**

ELC dmXLAN NodeGBx 8

## **Front truss**

06: Robe Robin Perfect S1.

03: Chauvet Parquad 18.

## **Center truss**

02: Cameo Matrix 100w.

04: Robe Robin Perfect S1.

## **Side trusses**

06: (3 on each side) Admiral Vintage Luminaire Ø53cm (Connected to dimmer).

## **Back truss**

03: Cameo Matrix 100w.

06: Robe Robin MiniPointe.

06: Robe Robin LEDwash 300+.

## **Backdrop truss**

06: Robe Robin MiniPointe.

06: Robe Robin LEDwash 300+.

### **Projection**

01: Panasonic PT-MZ770 Wuxga 8000 Lm (mounted on center truss).

01: 4m wide projection screen (mounted 5,3m behind stage front).

### **Haze**

01: Smoke Factory Tour Hazer 2.

### **Dimmer**

01: SRS DDP616 (6 Ch. Dimmer).

### **Lounge control**

ELC AC612XUB.

### **Lounge ArtNet node**

ELC dmXLAN node3

### **Entrance**

04: Chauvet Parquad 18.

### **Lounge area**

04: Chauvet Parquad 18.

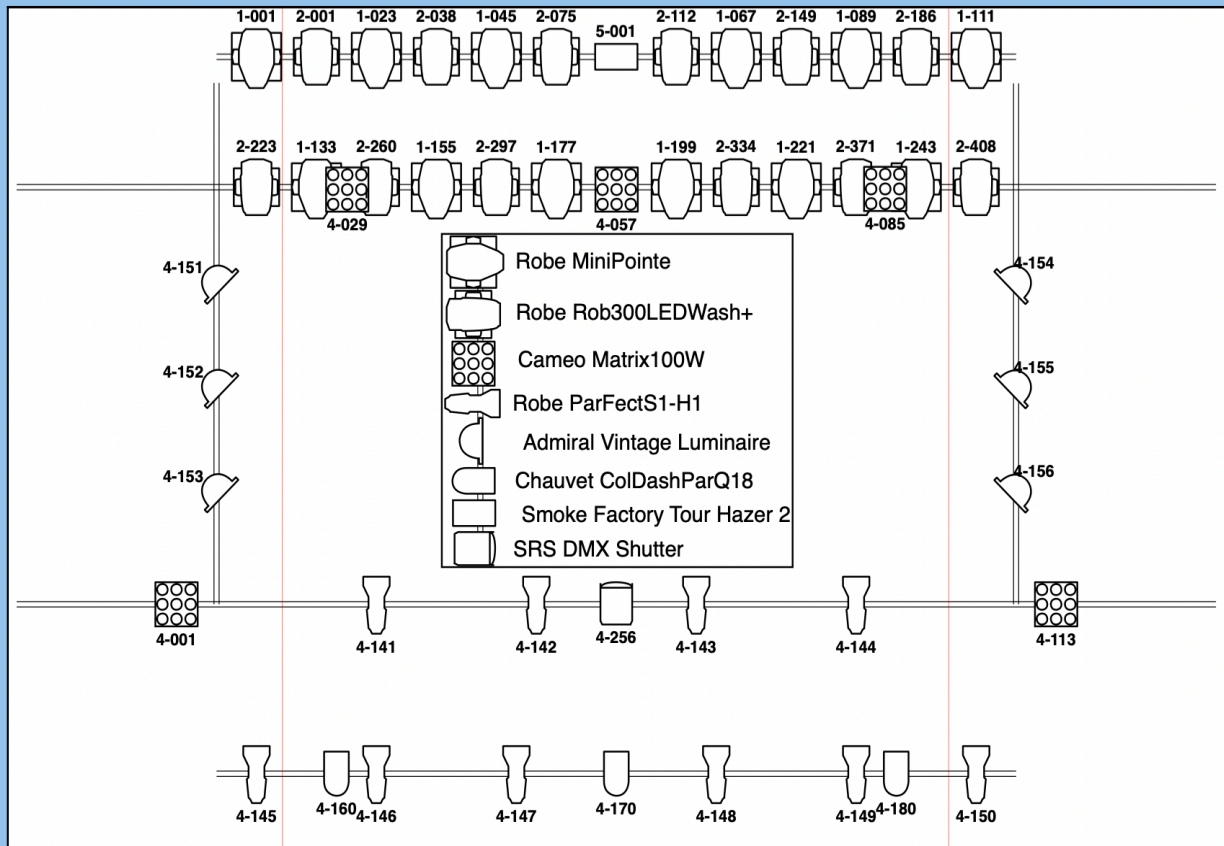
### **Additional Fixtures**

08: Robe Robin 100LEDBeam

(These lamps can be used to add an additional ground package)



## Light Plot and Patchlist



DMX	Position	Manufacturer	Model	Mode
01-001	Backdrop Truss	Robe	MiniPointe	Mode 1
01-023	Backdrop Truss	Robe	MiniPointe	Mode 1
01-045	Backdrop Truss	Robe	MiniPointe	Mode
01-067	Backdrop Truss	Robe	MiniPointe	Mode 1
01-089	Backdrop Truss	Robe	MiniPointe	Mode 1
01-111	Backdrop Truss	Robe	MiniPointe	Mode 1
01-133	Back Truss	Robe	MiniPointe	Mode 1
01-155	Back Truss	Robe	MiniPointe	Mode 1
01-177	Back Truss	Robe	MiniPointe	Mode 1
01-199	Back Truss	Robe	MiniPointe	Mode 1
01-221	Back Truss	Robe	MiniPointe	Mode 1
01-243	Back Truss	Robe	MiniPointe	Mode 1
02-001	Backdrop Truss	Robe	Rob300LEDWash+	Mode 1
02-038	Backdrop Truss	Robe	Rob300LEDWash+	Mode 1
02-075	Backdrop Truss	Robe	Rob300LEDWash+	Mode 1
02-112	Backdrop Truss	Robe	Rob300LEDWash+	Mode 1
02-149	Backdrop Truss	Robe	Rob300LEDWash+	Mode 1
02-186	Backdrop Truss	Robe	Rob300LEDWash+	Mode 1

02-223	Back Truss	Robe	Rob300LEDWash+	Mode 1
02-260	Back Truss	Robe	Rob300LEDWash+	Mode 1
02-297	Back Truss	Robe	Rob300LEDWash+	Mode 1
02-334	Back Truss	Robe	Rob300LEDWash+	Mode 1
02-371	Back Truss	Robe	Rob300LEDWash+	Mode 1
02-408	Back Truss	Robe	Rob300LEDWash+	Mode 1
04-001	Center Truss	Cameo	Matrix100w	28ch
04-029	Back Truss	Cameo	Matrix100w	28ch
04-057	Back Truss	Cameo	Matrix100w	28ch
04-085	Back Truss	Cameo	Matrix100w	28ch
04-113	Center Truss	Cameo	Matrix100w	28ch
04-141	Center Truss	Robe	ParFectS1-H1	Mode 1
04-142	Center Truss	Robe	ParFectS1-H1	Mode 1
04-143	Center Truss	Robe	ParFectS1-H1	Mode 1
04-144	Center Truss	Robe	ParFectS1-H1	Mode 1
04-145	Front Truss	Robe	ParFectS1-H1	Mode 1
04-146	Front Truss	Robe	ParFectS1-H1	Mode 1
04-147	Front Truss	Robe	ParFectS1-H1	Mode 1
04-148	Front Truss	Robe	ParFectS1-H1	Mode 1
04-149	Front Truss	Robe	ParFectS1-H1	Mode 1
04-150	Front Truss	Robe	ParFectS1-H1	Mode 1
04-151	Left Side Truss	Admiral	Vintage Luminaire	Dimmer
04-152	Left Side Truss	Admiral	Vintage Luminaire	Dimmer
04-153	Left Side Truss	Admiral	Vintage Luminaire	Dimmer
04-154	Right Side Truss	Admiral	Vintage Luminaire	Dimmer
04-155	Right Side Truss	Admiral	Vintage Luminaire	Dimmer
04-156	Right Side Truss	Admiral	Vintage Luminaire	Dimmer
04-160	Front Truss	Chauvet	ColDashParQ18	10ch
04-170	Front Truss	Chauvet	ColDashParQ18	10ch
04-180	Front Truss	Chauvet	ColDashParQ18	10ch
04-256	Center Truss	SRS	DMX Shutter	Dimmer
05-001	Stage Floor	Smoke Factory	Tour Hazer 2	Dimmer
05-002	Stage Floor	Smoke Factory	Tour Hazer 2	Dimmer

### **IP-Addresses**

#### **ELC dmXLAN NodeGBx 8**

IP: 2.1.19.28

Sub: 255.0.0.0

#### **ELC dmXLAN Node3**

IP: 2.0.71.14

Sub: 255.0.0.0

# Stage & rigging

## Stage dimensions

Performance stage deck: Width: 8m, Depth: 6m, Height: 0,8m.

Technical/monitor engineer stage deck: Width: 2m, Depth: 2m, Height: 0,8m.

## Risers

06: 2 x 1m stage decks.

Different leg heights and wheels available.

## Stage truss

Front truss: Eurotruss HD32, 10m wide, mounted 3m in front of stage front, 4,1m clearance from audience floor.

Center truss: electric chain hoists, Eurotruss HD34, 12m wide, hanging over the stage front. 3,6m clearance from stage floor to truss.

Back truss: electric chain hoists, Eurotruss HD34, 12m wide, hanging 4m behind the main stage front. 3,6m clearance from stage floor to truss.

Side trusses: 2x Eurotruss HD34, 4,5m wide, mounted on top of center and back truss, goes parallel with the main stage left and right. 3,9m clearance from stage floor to truss.

Backdrop truss: electric chain hoists, Eurotruss HD34, 8m wide, hanging 5,7m behind stage front. 3m clearance from stage floor to truss.

## Stage textiles

02: 4,1m x 2,8m black molton  
(mounted on a rail on center truss at stage left and right).

03: 4,1m x 6m black molton  
(mounted on a rail on back truss, can be used to cut off the stage by 2m).

02: 4,1m x 3,9m black molton  
(mounted on the side trusses).

02: 3m x 6m black molton  
(mounted on a cable tray against the stage back wall).

### Available power

02: 16A 3 phase CEE.

02: 16A 1 phase CEE.

04: 13A 1 phase Danish power outlets (for backline).

### Stage decks

All stage constructions and risers are made of 2m x 1m Teaflex stage decks.

### Electric chain hoists

All electric chain hoists are Movecat Double brake D8 plus UPplus series with a WLL of 320 kg.

### Textiles

All curtains and molton are by PriebeHOLD staging.

### Safety rigging

All our chain hoists, rigging points, shackles, safety wires and round slings are tested yearly by an authorized crane and lifting inspection company (<https://wedolifting.com/>)

