



# RICHTER

## Richter Venue specification

---

Valid from January 2020



# **Someday soon, you will be playing at Richter.**

Richter is a voluntary driven venue with support from Gladsaxe municipality.

All staff except the house sound technician and office are volunteers.

The venue has an audience capacity of 499 + 50 for complimentary tickets, artists and staff. Your guest list capacity is outlined in the deal.

The venue is situated at the town of Søborg which is approximately 9,5km (5 miles) from the center of Copenhagen, but you will be close to pretty much anything you might require.

We hope that you will take the time to read the following pages, as they should provide you with answers to the most common questions prior to your concert here at Richter.

Should any questions remain after reading this document, please do not hesitate to call or e-mail us.

Upon your arrival you will be greeted by the voluntary venue manager, who will ensure that you are well settled in the backstage area and that everything is according to our agreements.

The venue manager will be your main contact all day. We look forward to having you here and hope you will have a pleasant stay in Søborg.

# Office contact

## Technical & production

Lui Broch Larsen

Phone: +4553828838

Mail: Lui@Richter-gladsaxe.dk

---

## PR & communication

Line Holm Christensen

Phone: +4528786005

Mail: Line@Richter-gladsaxe.dk

---

## Manager & economy

Kasper Madsen

Phone: +4523398614

Mail: Kasper@Richter-gladsaxe.dk

# General Information

## Address

The venue address is: Telefonvej 8F 2860, Søborg.

## Finding the venue

When you arrive at "Telefonvej" you will be greeted by a sign that says Telefonfabrikken and Richter, when you see this sign turn right and follow the road, at the end of the road you will see another sign that says Richter then turn left, after you have turned left you will arrive at a carport where you will park and load in (see map at the bottom of this document).

## Parking

If you arrive in a car or in a van, please park underneath the carport up against the wall so that other cars can pass through. If you arrive in a bus, then park up against the lawn further down the road (see map at the bottom of this document).

We have one 16A 3 phase CEE for bus power.

Keep all gates, doors and walk paths cleared at all time. All parking is free.

## Load in

Before load in please announce your arrival by going through the main entrance (see map at the last page of this document). There you will be greeted by the venue manager, technicians and crew, who will open the gate at the carport. From the gate to main stage is approximately 40m with no obstacles in the way.

## Venue crew

Depends on production size, but as a minimum:

01: Voluntary venue manager 01: House sound engineer 01: Voluntary light engineer

## Wifi

Free WLAN is available  
please choose the network with SSID: Gladsaxe. WLAN is not password protected.

### **Dressing rooms**

One big dressing room with a shower, toilet, clothing iron, a sofa, a full-size mirror, a fridge, and a coffee machine.

One small dressing room, with makeup mirrors, one table, four chairs, a fridge and a coffee machine.

Both dressing rooms are next to stage with direct access to the load in area and carport.

### **Fire – Pyro – Confetti – Co2**

Please note that the use of open fire, pyrotechnics, confetti and CO2 are not allowed at Richter.

### **Smoking**

National law prohibits smoking in public areas, including but not limited to performance and backstage facilities. Smoking is allowed outside the venue. We kindly ask you to respect this rule, as we did not invent it nor do we want to spend all day acting as bad cops.

### **Merchandise**

We do not have a dedicated merch booth, but we will gladly put some tables out in the lobby area for you to set up whatever merch you may wish to sell. Please talk to the venue manager about this. Additional clothing racks and lights are available.

### **dB limits**

To ensure a healthy concert experience to our audience, and to comply with EU noise regulations towards our staff, we are enforcing a dB limit of 103 dB(A) averaged over 15 minutes (Leq 15 = 103 dB(A)). Values will be measured at FOH. A properly calibrated measurement system (<https://www.10eazy.com/>) will be available to the sound engineer.

Richter doesn't use a peak limiter or circuit breaker to enforce the rule, but our house engineer will engage in reducing the overall sound level if rules are not complied with.

# Sound

## **Main stage FOH**

Midas Pro2-CC-IP Digital Mixer.  
w/Midas DL251 StageBox 48 in/16 out.

## **Main stage PA**

02: L'acoustics LA4X.  
02: L'acoustics ARCS Wide.  
02: L'acoustics ARCS Focus.  
04: L'acoustics SB18 in a cardioid setup.

## **Main stage digital guestlines**

02: CAT 7 lines from main stage FOH to main stage right.

## **Café stage FOH**

Midas M32r Digital Mixer.  
w/02: Midas DL153 StageBoxes 32 in/16 out.

## **Café stage PA**

02: Turbosound NuQ152-AN.  
02: Turbosound NuQ118b-AN.

## **Monitors**

10: Turbosound TFX122M-AN.

## **Multitracking and virtual soundcheck**

01: 72 channel 96khz 24bit recording system powered  
by an Etherface 3 x AES50 interface by DSPRO.

### **Wireless system**

- 12: Shure QLXD4 Digital wireless receiver.
- 06: Shure QLXD2/Beta 58A-K51 Wireless handheld transmitter.
- 06: Shure QLXD1-K51 Wireless bodypack transmitter.

### **Microphones**

- 02: Audio-Technica AE3000.
- 06: Audio-Technica AE5100.
- 04: Audio-Technica ATM350A.
- 02: Audix ADX51.
- 02: Audix D2.
- 02: Audix D4.
- 01: Audix D6.
- 02: Audix I5.
- 06: DPA 4266.
- 04: Sennheiser E604.
- 02: Shure Beta 52A.
- 08: Shure Beta 58A.
- 02: Shure Beta 91A.
- 08: Shure SM57.

### **DI's**

- 02: ARX DI USB Pro.
- 14: Klark Teknik DN100.
- 02: Klark Teknik DN200.

### **Stands**

- 06: K&M Microphone stand w. long legs & boom.
- 08: K&M Microphone stand w. short legs & boom.
- 06: K&M Medium size microphone stand w. boom.
- 04: K&M Small size microphone stand w. boom.
- 06: K&M Small stand w. base plate & boom.
- 06: K&M Solist stand.

# Lights & AV

## **Main stage FOH**

Chamsys MagicQ MQ40N.

## **Main stage front truss**

06: Robe Robin Parfect S1.

04: Chauvet Parquad 18.

## **Main stage center truss**

02: Cameo Matrix 100w.

04: Robe Robin MiniPointe.

04: Robe Robin LEDwash 300+.

02: Robe Robin LEDbeam 100.

## **Main stage side trusses**

04: Chauvet Parquad 18.

04: Robe Robin Parfect S1.

04: Robe Robin LEDbeam 100.

06: Admiral Vintage Luminaire 58cm (Connected to dimmer).

## **Main stage back truss**

03: Cameo Matrix 100w.

06: Robe Robin MiniPointe.

04: Robe Robin LEDwash 300+.

## **Main stage floor**

02: Robe Robin LEDwash 300+.



### **Main stage projection**

01: Panasonic PT-MZ770 Wuxga 8000 Lm (mounted on main stage center truss).

01: 4m wide projection screen (mounted 5,3m behind main stage front).

### **Main stage haze**

01: Smoke Factory Tour Hazer 2.

### **Main stage dimmer**

01: SRS DDP616 (6 Ch. Dimmer).

### **Café stage FOH**

Chamsys MagicQ Mini Wing.

### **Café stage truss**

04: Chauvet Parquad 18.

02: Robe Robin MiniPointe.

02: Robe Robin LEDwash 300+.

02: Robe Robin LEDbeam 100.

### **Entrance**

04: Chauvet Parquad 18.

### **Lobby area**

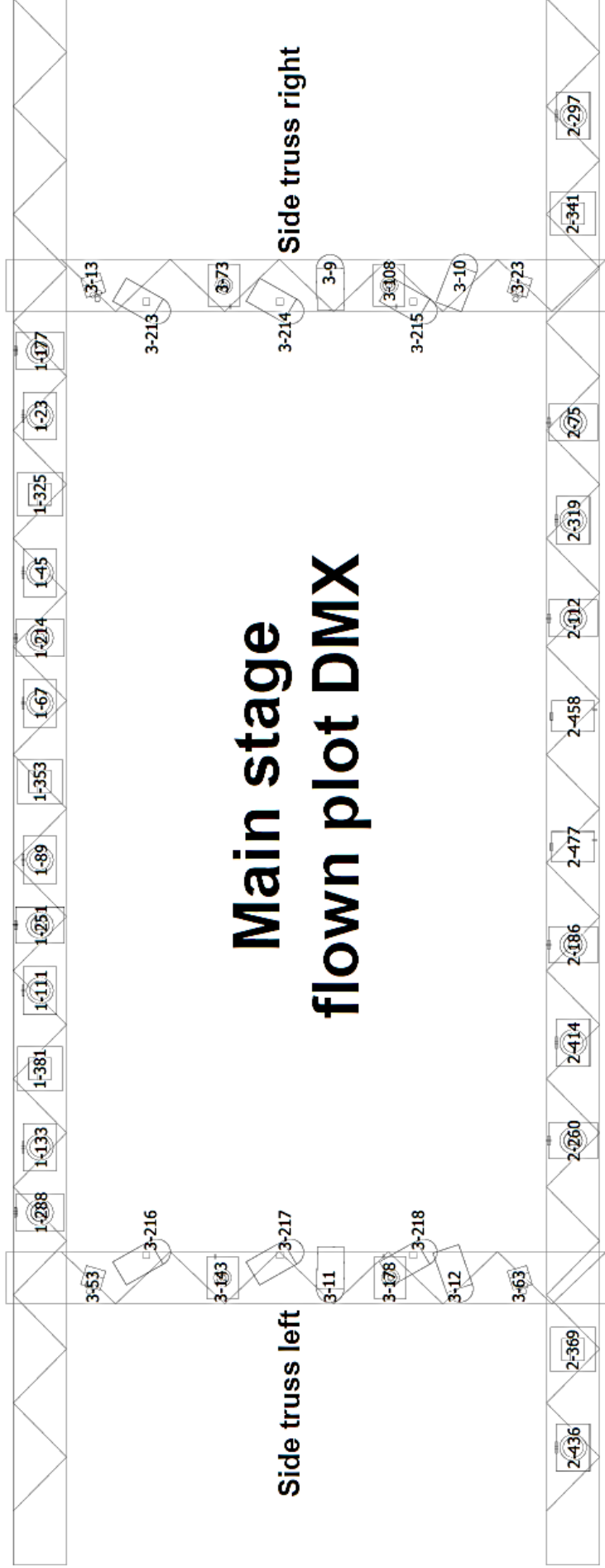
04: Chauvet Parquad 18.

### **Light plot and patch list**

Please see next pages or download them as a PDF file at:

<https://richter-gladsaxe.dk/om-richter/tekniske-specifikationer/>

Back truss



# Main stage flown plot DMX

Side truss left

Side truss right

Center truss

Front truss



Main stage backwall

3-1

Tech/monitor  
engineer  
stage deck

3-219

3-256

# Main stage floor plot DMX

Main stage front

# Café stage flown plot DMX



Café truss

4-40

4-30

**Entrance**

4-10

4-20

**Lobby**

4-80

4-60

4-70

4-50

Head No	DMX	Position	Manufacturer	Model	Mode
1	01-023	Back Truss	Robe	MiniPointe	Mode 1
2	01-045	Back Truss	Robe	MiniPointe	Mode 1
3	01-067	Back Truss	Robe	MiniPointe	Mode 1
4	01-089	Back Truss	Robe	MiniPointe	Mode 1
5	01-111	Back Truss	Robe	MiniPointe	Mode 1
6	01-133	Back Truss	Robe	MiniPointe	Mode 1
22	01-177	Back Truss	Robe	Rob300LEDWash+	Mode 1
23	01-214	Back Truss	Robe	Rob300LEDWash+	Mode 1
24	01-251	Back Truss	Robe	Rob300LEDWash+	Mode 1
25	01-288	Back Truss	Robe	Rob300LEDWash+	Mode 1
75	01-325	Back Truss	Cameo	Matrix100w	28ch
76	01-353	Back Truss	Cameo	Matrix100w	28ch
77	01-381	Back Truss	Cameo	Matrix100w	28ch
17	02-075	Center Truss	Robe	Rob300LEDWash+	Mode 1
18	02-112	Center Truss	Robe	Rob300LEDWash+	Mode 1
20	02-186	Center Truss	Robe	Rob300LEDWash+	Mode 1
21	02-260	Center Truss	Robe	Rob300LEDWash+	Mode 1
39	02-297	Center Truss	Robe	MiniPointe	Mode 1
40	02-319	Center Truss	Robe	MiniPointe	Mode 1
73	02-341	Center Truss	Cameo	Matrix100w	28ch
74	02-369	Center Truss	Cameo	Matrix100w	28ch
41	02-414	Center Truss	Robe	MiniPointe	Model
42	02-436	Center Truss	Robe	MiniPointe	Model
43	02-458	Center Truss	Robe	Rob100LEDBeam	Mode 2
44	02-477	Center Truss	Robe	Rob100LEDBeam	Mode 2
28	03-001	Main Stage Floor	Smoke Factory	Tour Hazer 2	
7	03-003	Front Truss	Robe	ParFectS1-H1	Mode 1
8	03-004	Front Truss	Robe	ParFectS1-H1	Mode 1
9	03-005	Front Truss	Robe	ParFectS1-H1	Mode 1
10	03-006	Front Truss	Robe	ParFectS1-H1	Mode 1
11	03-007	Front Truss	Robe	ParFectS1-H1	Mode 1
12	03-008	Front Truss	Robe	ParFectS1-H1	Mode 1
13	03-009	Side Truss Right	Robe	ParFectS1-H1	Mode 1
14	03-010	Side Truss Right	Robe	ParFectS1-H1	Mode 1
15	03-011	Side Truss Left	Robe	ParFectS1-H1	Mode 1
16	03-012	Side Truss Left	Robe	ParFectS1-H1	Mode 1
47	03-013	Side Truss Right	Chauvet	ColDashParQ18	10ch
48	03-023	Side Truss Right	Chauvet	ColDashParQ18	10ch
49	03-033	Front Truss	Chauvet	ColDashParQ18	10ch
50	03-043	Front Truss	Chauvet	ColDashParQ18	10ch

53	03-053	Side Truss Left	Chauvet	ColDashParQ18	10ch
54	03-063	Side Truss Left	Chauvet	ColDashParQ18	10ch
35	03-073	Side Truss Right	Robe	Rob100LEDBeam	Mode 1
36	03-108	Side Truss Right	Robe	Rob100LEDBeam	Mode 1
37	03-143	Side Truss Left	Robe	Rob100LEDBeam	Mode 1
38	03-178	Side Truss Left	Robe	Rob100LEDBeam	Mode 1
26	03-219	Main Stage Floor	Robe	Rob300LEDWash	Mode 1
27	03-256	Main Stage Floor	Robe	Rob300LEDWash	Mode 1
51	03-300	Front Truss	Chauvet	ColDashParQ18	10ch
52	03-310	Front Truss	Chauvet	ColDashParQ18	10ch
55	04-010	Entrance	Chauvet	ColDashParQ18	10ch
56	04-020	Entrance	Chauvet	ColDashParQ18	10ch
57	04-030	Entrance	Chauvet	ColDashParQ18	10ch
58	04-040	Entrance	Chauvet	ColDashParQ18	10ch
59	04-050	Lobby	Chauvet	ColDashParQ18	10ch
60	04-060	Lobby	Chauvet	ColDashParQ18	10ch
61	04-070	Lobby	Chauvet	ColDashParQ18	10ch
62	04-080	Lobby	Chauvet	ColDashParQ18	10ch
63	04-090	Café Truss	Chauvet	ColDashParQ18	10ch
64	04-100	Café Truss	Chauvet	ColDashParQ18	10ch
65	04-110	Café Truss	Chauvet	ColDashParQ18	10ch
66	04-120	Café Truss	Chauvet	ColDashParQ18	10ch
69	04-130	Café Truss	Robe	MiniPointe	Mode 1
70	04-152	Café Truss	Robe	MiniPointe	Mode 1
67	04-200	Café Truss	Robe	Rob100LEDBeam	Mode 1
68	04-235	Café Truss	Robe	Rob100LEDBeam	Mode 1
71	04-342	Café Truss	Robe	Rob300LEDWash+	Mode 1
72	04-379	Café Truss	Robe	Rob300LEDWash+	Mode 1

### Additional lightning fixtures

If you have any additional lightning fixtures with you, we will hook you up to universe 4 and control the café, lobby and entrance lights on another console. If you demand more room for lightning fixtures, please let us know before your arrival.

Our default showfile is available to download at:

<https://richter-gladsaxe.dk/om-richter/tekniske-specifikationer/>

# Stage & rigging

## Main stage dimensions

Performance stage deck: Width: 8m, Depth: 6m, Height: 0,8m.

Technical/monitor engineer stage deck: Width: 2m, Depth: 2m, Height: 0,8m.

## Main stage risers

10: 2 x 1m stage decks.

Different leg heights and wheels available.

## Main stage truss

Front truss: electric chain hoists, Eurotruss HD34, 10m wide, mounted 3m in front of main stage front, 4,1m over floor.

Center truss: electric chain hoists, Eurotruss HD34, 12m wide, mounted at main stage front, 3,6m over stage deck.

Back truss: electric chain hoists, Eurotruss HD34, 12m wide, mounted 4m behind main stage front, 3,6m over stage deck.

Side trusses: 2x Eurotruss HD34, 4,5m wide, mounted on top of center and back truss, goes parallel with stage left and right, 3,9m over stage deck.

Backdrop truss: chain block hoist, Eurotruss HD32, 9m wide, mounted 5,7m behind stage front.

## Main stage textiles

02: 4,1m x 2,8m black molton  
(mounted on a rail on center truss at stage left and right).

03: 4,1m x 6m black molton  
(mounted on a rail on back truss, can be used to cut off the stage by 2m).

02: 4,1m x 3,9m black molton  
(mounted on the side trusses).

02: 3m x 6m black molton  
(mounted on a cable tray against main stage backwall).



### **Main stage available power**

02: 16A 3 phase CEE.

02: 16A 1 phase CEE.

02: 13A 1 phase Danish power outlets (for backline).

### **Café stage dimensions**

Stage deck: width 3m, Depth: 2m, Height: 0,3m (this stage is for small acoustic acts).

### **Café stage truss**

Chain block hoist, Eurotruss HD34, 6m wide, mounted 0,5m in front of bar stage front.

### **Café stage available power**

01: 13A 1 phase Danish power outlets (for backline).

### **Stage decks**

All stage constructions and risers are made of 2m x 1m Teaflex stage decks.

### **Electric chain hoists**

All electric chain hoists are Movecat Double brake D8 plus UPplus series with a WLL of 320 kg.

### **Block chain hoists**

All block chain hoists are GUIL POLI/3 1000kg Chain hoists.

### **Textiles**

All curtains and molton is by Admiral staging.

### **Safety rigging**

All our chain hoists, rigging points, shackles, safety wires and round slings are tested yearly by an authorized crane and lifting inspection company (<https://wedolifting.com/>)

# Map

